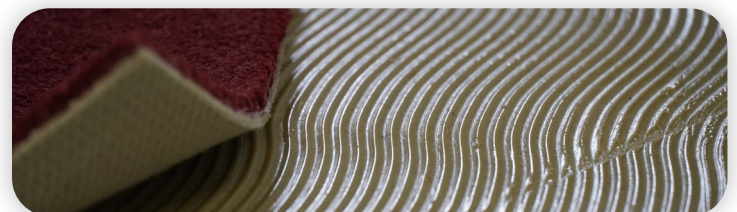
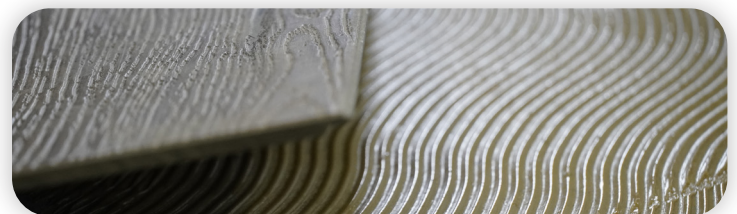
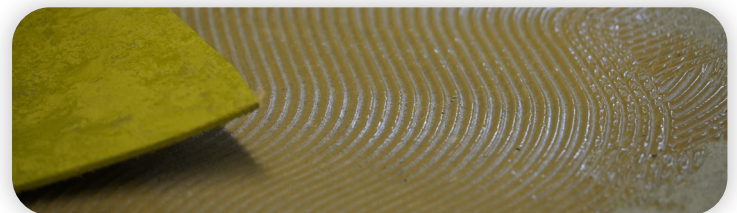
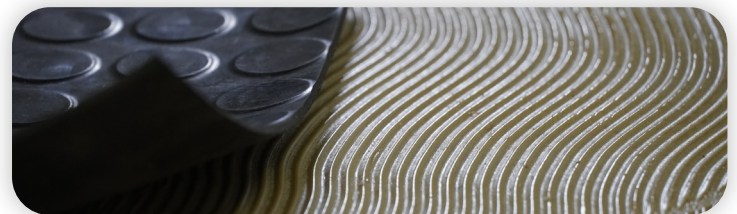
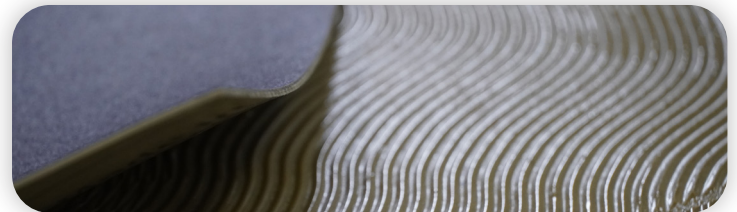


# Lechner

SOLUTIONS FOR PROFESSIONAL CONSTRUCTION



## FIELDS OF APPLICATION



RESILIENT LINE



WOOD LINE



MARINE LINE



ARTIFICIAL GRASS LINE



EQUIPMENT AND ACCESSORIES LINE

# MASTIPREN

UNIVERSAL HIGHLY STRONG DOUBLE COATING FLUID ADHESIVE

## DESCRIPTION AND USES PRODUCT FOR PROFESSIONAL USE ONLY

Polychloroprene-based double coating solvent adhesive, suitable for gluing baseboards, plastic laminates, various profiles, steps, PVC flooring and wall coverings, carpets, linoleum, rubber, cork, in sheets or tiles, on absorbent or non-absorbent surfaces. MASTIPREN LP 53 is toluol-free.

### PRODUCT FEATURES



#### Application

Lechner toothed trowel no. 1



#### Double coating



#### Suitable for indoor use



#### Suitable for under-floor heating systems



#### Suitable for wheelchairs

#### Waiting time

15-20 minutes

#### Open time

40 minutes

#### Dry-to-walk-on time

immediate

#### Final setting time

48 hours



#### Appearance

Paste



#### Color

Yellow



#### Chemical base

Polychloroprene in solvent



#### Storage

12 months in original sealed packaging



#### Consumption

150 g/m<sup>2</sup> per coating



#### Operating temperature

+10 - +30 °C



#### Cleaning

Solvent CH 500 (as long as the product is fresh)



#### Mix before use

### METHOD OF USE

The substrate must be compact, in good condition, established, permanently dry and free from detaching substances such as oils, waxes, excess dust, etc. Maximum allowable moisture content:

- Cementitious substrates: max. 2.0%; with underfloor heating 1.7%.
- Gypsum or anhydrite substrates: max. 0.5%; with underfloor heating 0.2%.

It is recommended to check that there is no rising moisture, in which case it is not possible to install. Substrates with an insufficiently flat or uneven laying surface can be leveled with cement-based leveling compounds, such as LIVELLANTE 140M, ULTRADUR, RASODUR, LEVELFAST, LEVELFAST S or RASODUR MAXI. Mix the product before use. Use a small-toothed trowel to apply the adhesive on the substrate and on the back of the material to be laid, taking care to incorporate any residual surface dust. Wait 15-20 minutes to allow the solvents to evaporate, then, once both surfaces are completely dry, press the surface to ensure full contact with the adhesive layer while gluing. Once the materials have been glued, the installation cannot be altered. A few hours before gluing, remove the wall covering from its packaging, laying it on the floor to reduce its tension and allow it to acclimatize to the working environment. Avoid exposure to excessively high temperatures.

### OTHER INFORMATION

The application and gluing times indicated in the product features correspond to an ambient temperature of +20°C and a relative air humidity of 50%. The product and the flooring should be stored in the conditions of the desired rooms. It is always recommended to check the materials to be laid for compatibility and accelerated aging, especially if they are particularly thin, light-colored or new, so dyes or plasticizers contained within the coverings are not transferred to other areas. The fixed floors can only be welded after 24 hours. Avoid exposure to excessively high temperatures.

### INSTRUCTIONS

**FOR SAFETY AND DISPOSAL:** Consult the relevant safety data sheet before using the product. Gloves are recommended during use. Ventilate the room during and after use. Follow all applicable safety regulations. Do not dispose of any residue in the ground, waterways or drains. To dispose of the product and other waste deriving from the activity, adhere closely to the provisions of Legislative Decree no. 152/2006 and subsequent amendments and additions of the Consolidated Environmental Act (Testo Unico Ambientale). For further information, please contact our Technical Assistance Department. The content of this sheet integrates and replaces the previous version, rendering it null and void.

**WARNINGS:** The data provided in this data sheet reflects our best theoretical and practical knowledge. However, it is not possible for us to consider every detail, therefore this information should not be considered as binding. In the event of any doubt, please contact our technical offices.